

Aduro Wall Panel Installation Instructions

The instructions contained in this Installation Instruction form are the recommendations for the application of Aduro Display products as outlined and illustrated under normal conditions of installation. The recommendations provided in this form represent our best judgment based on normal applications. Any deviation from these recommended instructions shall be at the sole risk of the installers. Carefully inspect all parts. If a part is defective, note it on the delivery shipping form and notify Aduro Display at: Info@AduroDisplay.com right away. Failure to do so shall be at the sole risk of the installer.

System Overview

The Aduro Display (Aduro Wall) is a simple and economical horizontal support system. The Aduro Wall can be used on any perimeter wall.

The Aduro Wall is offered in a wide range of sizes, groove configurations and finishes.

Typical panels are 3/4" thick, 4' x 8' in size, and are grooved 3" O/C long groove. Grooves are inserted with rigid vinyl inserts and every other groove is powered. See Figure 2.

Installation Overview

- Define the installation area
- Establish a level baseline
- Screw the panel to the wall
- Align and secure subsequent panels to the wall, field cut as needed (see special cutting instructions)

Application

Examples of suitable wall structures: wood, metal, concrete, or drywall all with adequate studs or vertical furring for securing the panels.

Safety

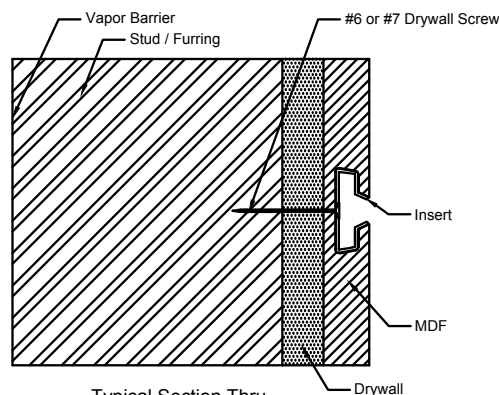
Always wear proper safety glasses or goggles and hand protection. Use all safety precautions when using power tools.

Required Tools

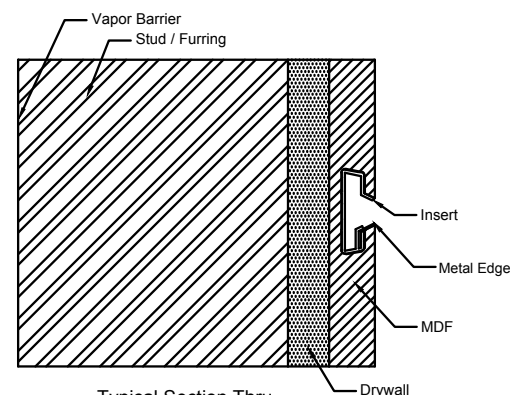
- Two or more people for handling panels
 - Ordinary carpenter tools, laser level, chalk line
 - Circular saw with fine tooth blade (carbided tipped for metal or mirror panel finishes)
 - Power drill and screw gun
 - 5/132" drill bit
 - #6 or #7 bugle head drywall screws.
- Note: proper length and type to be determined by installer based upon substructure

Preparation and Handling

- Follow local building codes and procedures
- Lift panels, do not slide, for they may scratch. Be careful of all edges and corners for they may be easily damaged and may be sharp.
- Building to be completely enclosed. Structural walls should be finished, dry, solid, and true.
- Allow panels to equalize to room environment prior to installing.



Typical Section Thru
Vinyl Insert
Figure 1



Typical Section Thru
Powered Vinyl Insert
Figure 2

Horizontal Support System Layout and Assembly

Define the Installation Area

- Review the construction documents and determine the areas that will receive the Aduro Wall panels.
- The Aduro Wall may be installed directly over metal or wood studs or over drywall surfaces.
- Verify installation area has adequate supporting studs or vertical furring.

Step 1 - Define a level base line for the entire area

- Strike a level line with a laser level or chalk line at the height of a panel across the length of the installation.
- All panel edges must align exactly with this line for proper results.

Step 2 - Secure initial panel to the wall with screws

Note: **Powered grooves** can be identified by a metal edge on the lower edge of the groove (See Figure 2). **Do not screw into the powered grooves.** Use the non-powered grooves for mounting (See Figure 1).

- Fasten initial bottom panel to the wall with #6 or #7 bugle head drywall screws. Install a minimum of one screw every other **non-powered** groove vertically and every stud horizontally, typically every 16" o/c horizontally (maximum 24" o/c horizontally). Each 4' x8' panel should have a minimum of (42) screws secured to studs or furring.
- Aduro Wall panels require 5/32" predrilling of holes thru the insert and panel for the mounting screws. Screws must be installed thru the **non-powered** grooves to ensure optimum hang strength.
- Always use a bit that is long enough to seat the screws without damaging the groove lips.

Step 3 - Align grooves and secure subsequent panels End to End to the wall

Note: Aduro Wall may be stacked vertically but will require a special order and instructions. Please call for pricing. Aduro Wall however may be mounted horizontally end to end indefinitely as long as each 4 x 8 panel is powered by its own respective supplied transformer. Each separate panel with end-caps may be straddled by the Aduro shelving as long as the center connector on the shelving is in the powered groove of one panel or the adjacent panel.

- All panels to be secured to the wall with screws as noted in previous step. Caution: Failure to follow recommended fastener scheme may have negative effects on the stability and hang strength capability of the Aduro Wall.

Step 4 - Repeat until perimeter wall is complete

Field cut panels as needed.

Note: Cut panels face down with a circular saw or face up if using a table saw to minimize chipping and to ensure a clean cut edge. It is not necessary to take the vinyl inserts out of the grooves before cutting. Run a piece of wide masking tape over the inserts parallel to the groove. This will help keep the inserts from shifting during your cut.

- From the right edge of the Aduro Wall where the power connector is located measure and cut to the desired length.
- After cutting, remove left end cap from remnant and replace onto the left edge of the Aduro Wall.

Step 5 – Powering the Aduro Wall

Connect the supplied 50-watt transformer with the male barrel connector, into the female connector located in the bottom right corner of the Aduro Wall, and then plug the low-voltage transformer into the wall.